

# L I N E A

Robustez, confiabilidad y máximo rendimiento en la línea PST diseñada para trabajos intensivos en múltiples aplicaciones. Una electrobomba centrífuga horizontal monoblock normalizada bridada fabricada en fundición de hierro con impulsor de acero inoxidable. Aliado ideal para equipos de incendio, procesos industriales, abastecimiento de agua en grandes edificios, hotelería y complejos habitacionales.

Construidas en hierro fundido con tratamiento anti-corrosión.

Impulsor cerrado de máxima eficiencia fabricado en acero inoxidable.

Sello mecánico SIC/GRAFITO.

Motores trifásicos de 2900rpm 50hz IE3 IP55.

Potencias de 3HP a 50HP.

Caudales hasta 138m<sup>3</sup>/h y Alturas hasta 91mca.

Aptas para uso continuo intensivo.

Norma EN733.

Temperatura del líquido de -10°C a +120°C.

Temperatura ambiente de -10°C a +50°C.

## Motor Mob ASESORANDO INDUSTRIAS



Minería



Agricultura



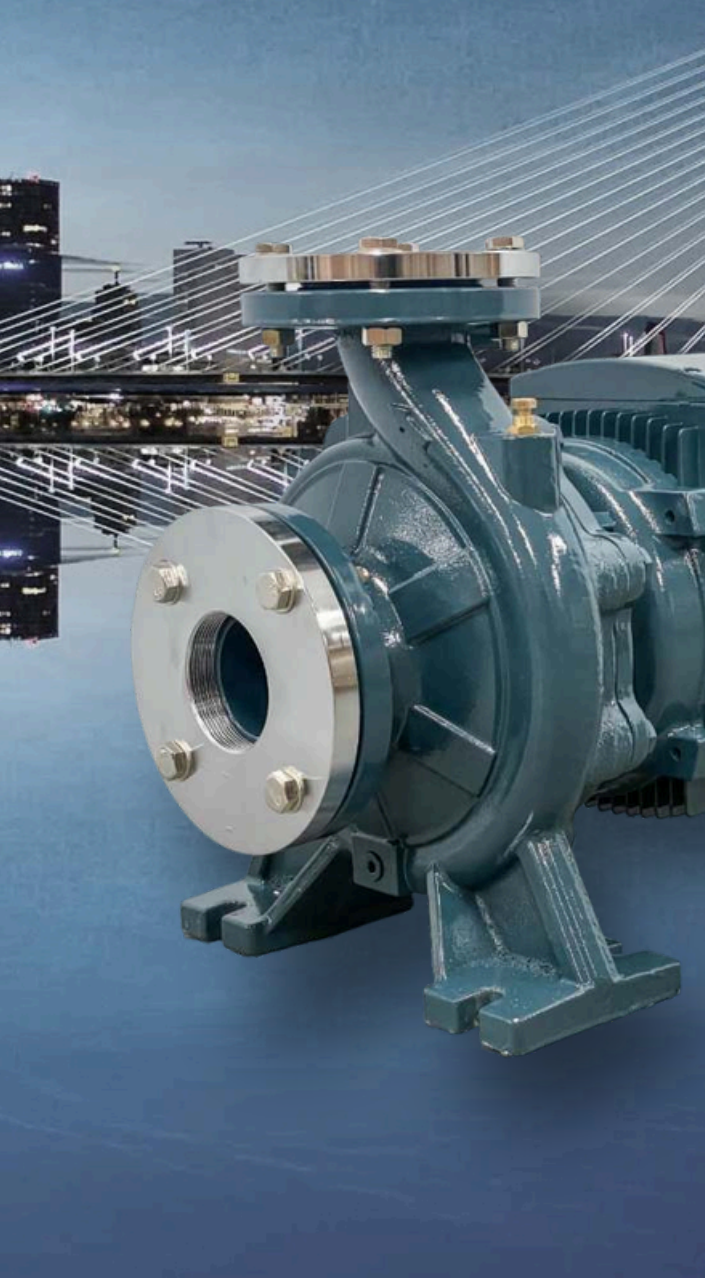
Industria

[www.electromecanicamm.com.ar](http://www.electromecanicamm.com.ar)  
[ventas@electromecanicamm.com.ar](mailto:ventas@electromecanicamm.com.ar)

- Motores Electricos - Motorreductores
- Bombas Centrifugas y Autocebantes
- Bombas Para Presurizacion y Calefaccion
- Bombas Para Desagote y Sumergibles
- Valvulas y Accesorios
- Bobinados - Reparaciones
- Sellos Mecanicos - Repuestos
- Ventilacion Industrial
- Montajes Industriales
- Bombas para desagote y sumergibles
- Equipos contra incendio



11-5802-0018



# Serie PST

## CENTRÍFUGAS MONOBLOCK BRIDADA

- ↯ Electrobomba centrífuga horizontal normalizada monoblock bridada.
- ↯ Motor trifásico 3x380 IE3 IP55 Clase F.
- ↯ Impulsores de acero inoxidable SS304/ Eje de acero inoxidable Ss304/ Cuerpo de fundición de hierro.
- ↯ Bobinado de cobre.
- ↯ Temperatura máxima del líquido 80°.

| DATOS TÉCNICOS |     |         |       | Q: Caudal |      |      |      |      |      |      |      |      |      |      |       |       |       |
|----------------|-----|---------|-------|-----------|------|------|------|------|------|------|------|------|------|------|-------|-------|-------|
| MODELO         | HP  | Tensión | DN mm | I/min     | 0    | 100  | 150  | 250  | 300  | 400  | 450  | 600  | 666  | 700  | 750   | 800   | 833   |
|                |     |         |       | m3/h      | 0.0  | 6.0  | 9.0  | 15.0 | 18.0 | 24.0 | 27.0 | 36.0 | 40.0 | 42.0 | 45.0  | 48.0  | 50.0  |
| PST 32-160/22  | 3   | 3x380   | 50x32 | Altura    | 31.0 | 29.6 | 28.5 | 24.5 | 22.0 | 15.0 |      |      |      |      |       |       |       |
| PST 32-200/30  | 4   | 3x380   | 50x32 |           | 44.2 | 42.0 | 39.8 | 35.2 | 32.2 | 24.6 | 19.8 |      |      |      |       |       |       |
| PST 32-200/40  | 5.5 | 3x380   | 50x32 |           | 54.5 | 52.0 | 50.0 | 45.5 | 42.3 | 35.0 | 30.3 |      |      |      |       |       |       |
| PST 32-250/55  | 7.5 | 3x380   | 50x32 |           | 60.0 | 59.5 | 59.0 | 55.0 | 50.2 | 34.5 |      |      |      |      |       |       |       |
| PST 32-250/75  | 10  | 3x380   | 50x32 |           | 69.5 | 69.0 | 68.5 | 66.0 | 63.0 | 53.0 |      |      |      |      |       |       |       |
| PST 40-160/30  | 4   | 3x380   | 65x40 |           | 31.8 |      |      |      | 29.5 | 27.5 | 26.3 | 21.5 | 18.8 | 17.2 |       |       |       |
| PST 40-160/40  | 5.5 | 3x380   | 65x40 |           | 38.0 |      |      |      | 36.0 | 34.0 | 33.0 | 28.5 | 26.1 | 24.9 | 22.4  | 20.0  |       |
| PST 40-200/55  | 7.5 | 3x380   | 65x40 |           | 46.0 |      |      | 44.1 | 43.8 | 41.3 | 40.1 | 35.0 | 31.6 | 30.0 |       |       |       |
| PST 40-200/75  | 10  | 3x380   | 65x40 |           | 57.0 |      |      |      | 53.6 | 51.5 | 50.0 | 45.0 | 42.5 | 41.1 | 38.9  | 36.5  |       |
| PST 40-250/110 | 15  | 3x380   | 65x40 |           | 72.0 |      |      |      | 67.5 | 65.0 | 63.5 | 57.5 | 54.9 | 52.9 | 50.0  | 47.0  |       |
| PST 40-250/150 | 20  | 3x380   | 65x40 | 84.5      |      |      |      | 79.3 | 77.3 | 75.2 | 70.0 | 67.1 | 66.0 | 63.1 | 61.0  |       |       |
| MODELO         | HP  | Tensión | DN mm | I/min     | 0    | 600  | 666  | 750  | 800  | 900  | 1000 | 1200 | 1400 | 1500 | 1800  | 2000  | 2300  |
|                |     |         |       | m3/h      | 0.0  | 36.0 | 40.0 | 45.0 | 48.0 | 54.0 | 60.0 | 72.0 | 84.0 | 90.0 | 108.0 | 120.0 | 138.0 |
| PST 50-125/40  | 5.5 | 3x380   | 65x50 | Altura    | 24.0 | 23.1 | 22.3 | 21.9 | 21.5 | 20.3 | 19.1 | 15.8 | 11.8 |      |       |       |       |
| PST 50-160/55  | 7.5 | 3x380   | 65x50 |           | 32.0 | 30.6 | 29.0 | 28.3 | 28.0 | 26.6 | 25.0 | 20.5 | 14.8 |      |       |       |       |
| PST 50-160/75  | 10  | 3x380   | 65x50 |           | 40.0 | 38.0 | 37.0 | 36.2 | 36.0 | 34.4 | 33.0 | 29.0 | 24.0 | 21.0 |       |       |       |
| PST 50-200/110 | 15  | 3x380   | 65x50 |           | 57.5 | 53.5 | 52.0 | 51.0 | 50.0 | 47.5 | 46.0 | 40.0 | 34.0 | 29.0 |       |       |       |
| PST 50-250/150 | 20  | 3x380   | 65x50 |           | 68.5 | 64.0 | 62.0 | 61.1 | 61.5 | 59.0 | 53.2 | 50.0 | 41.0 |      |       |       |       |
| PST 50-250/185 | 25  | 3x380   | 65x50 |           | 79.0 | 75.8 | 75.7 | 74.2 | 74.0 | 71.5 | 70.0 | 63.5 | 55.5 | 47.0 |       |       |       |
| PST 50-250/220 | 30  | 3x380   | 65x50 |           | 89.5 | 86.0 | 85.9 | 85.0 | 84.0 | 81.5 | 80.0 | 73.5 | 63.5 | 57.0 |       |       |       |
| PST 65-125/55  | 7.5 | 3x380   | 80x65 |           | 23.0 |      | 21.6 | 21.3 | 21.1 | 20.8 | 20.2 | 19.1 | 17.5 | 16.8 | 13.7  |       |       |
| PST 65-125/75  | 10  | 3x380   | 80x65 |           | 27.0 |      | 26.1 | 26.0 | 25.8 | 25.4 | 25.1 | 24.3 | 23.1 | 22.5 | 19.9  | 17.9  |       |
| PST 65-160/110 | 15  | 3x380   | 80x65 |           | 36.0 |      |      |      | 34.6 | 34.3 | 34.0 | 33.0 | 31.5 | 30.8 | 28.0  | 25.5  |       |
| PST 65-160/150 | 20  | 3x380   | 80x65 | 42.0      |      |      |      | 40.9 | 40.4 | 40.2 | 39.2 | 38.1 | 37.5 | 35.5 | 33.0  | 29.5  |       |
| PST 65-200/185 | 25  | 3x380   | 80x65 | 52.0      |      |      |      | 52.0 | 51.9 | 51.3 | 51.1 | 50.1 | 49.0 | 48.2 | 45.0  | 42.0  |       |
| PST 65-200/220 | 30  | 3x380   | 80x65 | 59.0      |      |      |      | 59.0 | 59.0 | 58.8 | 58.2 | 57.0 | 56.0 | 55.0 | 51.9  | 49.0  | 44.5  |
| PST 65-250/300 | 40  | 3x380   | 80x65 | 80.0      |      | 80.0 | 79.9 | 79.5 | 79.0 | 78.9 | 77.5 | 75.5 | 74.7 | 70.8 | 66.0  | 58.0  |       |
| PST 65-250/370 | 50  | 3x380   | 80x65 | 92.0      |      | 90.9 | 90.3 | 90.0 | 89.7 | 89.0 | 88.3 | 86.0 | 85.0 | 81.5 | 77.0  | 68.0  |       |



# TABLAS DE RENDIMIENTO

# L I N E A

| MODEL         | HP  | Kw  | RPM  | Volt | Amp      | Frec (Hz) | IP | Ph | Gpm       | 0,0 | 26,4 | 39,6 | 66,0 | 79,2 | 106,0 | 119,0 | 158,0 | 185,0 |  |
|---------------|-----|-----|------|------|----------|-----------|----|----|-----------|-----|------|------|------|------|-------|-------|-------|-------|--|
| MODELO        |     |     |      |      |          |           |    |    | m3/h      | 0,0 | 6,0  | 9,0  | 15,0 | 18,0 | 24,0  | 27,0  | 36,0  | 42,0  |  |
| PST 32-160/22 | 3   | 2,2 | 2900 | 380  | 7,9/4,4  | 50        | 55 | 3  | Alt (ft)  | 102 | 97   | 94   | 80   | 72   | 49    |       |       |       |  |
|               |     |     |      |      |          |           |    |    | Alt (mts) | 31  | 30   | 29   | 25   | 22   | 15    |       |       |       |  |
| PST 32-200/30 | 4   | 3   | 2900 | 380  | 10,9/6,2 | 50        | 55 | 3  | Alt (ft)  | 145 | 138  | 131  | 115  | 106  | 81    | 65    |       |       |  |
|               |     |     |      |      |          |           |    |    | Alt (mts) | 44  | 42   | 40   | 35   | 32   | 25    | 20    |       |       |  |
| PST 32-200/40 | 5,5 | 4   | 2900 | 380  | 8,2/4,7  | 50        | 55 | 3  | Alt (ft)  | 145 | 145  | 145  | 145  | 145  | 145   | 145   |       |       |  |
|               |     |     |      |      |          |           |    |    | Alt (mts) | 55  | 52   | 50   | 46   | 42   | 35    | 30    |       |       |  |
| PST 32-250/55 | 7,5 | 5,5 | 2900 | 380  | 11,1/6,4 | 50        | 55 | 3  | Alt (ft)  | 197 | 195  | 194  | 180  | 165  | 113   |       |       |       |  |
|               |     |     |      |      |          |           |    |    | Alt (mts) | 60  | 60   | 59   | 55   | 50   | 35    |       |       |       |  |
| PST 32-250/75 | 10  | 7,5 | 2900 | 380  | 15/8,7   | 50        | 55 | 3  | Alt (ft)  | 228 | 226  | 225  | 217  | 207  | 174   |       |       |       |  |
|               |     |     |      |      |          |           |    |    | Alt (mts) | 70  | 69   | 69   | 66   | 63   | 53    |       |       |       |  |

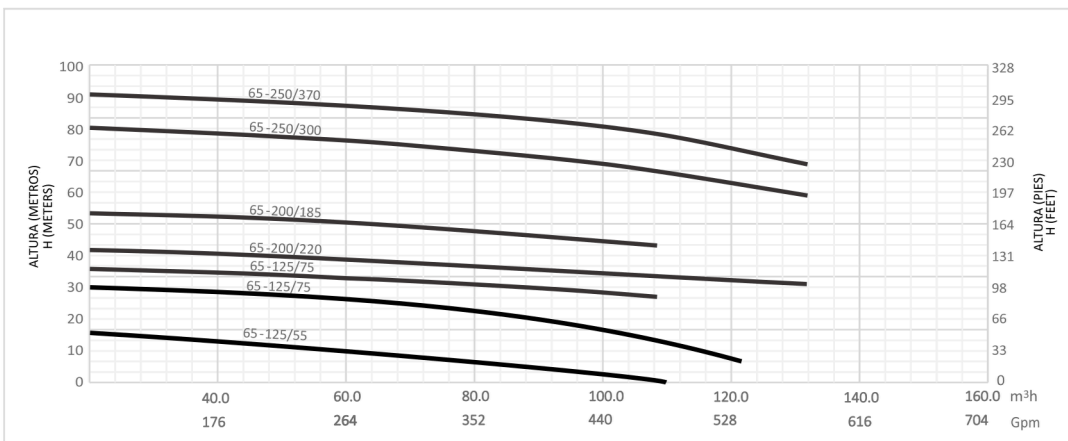
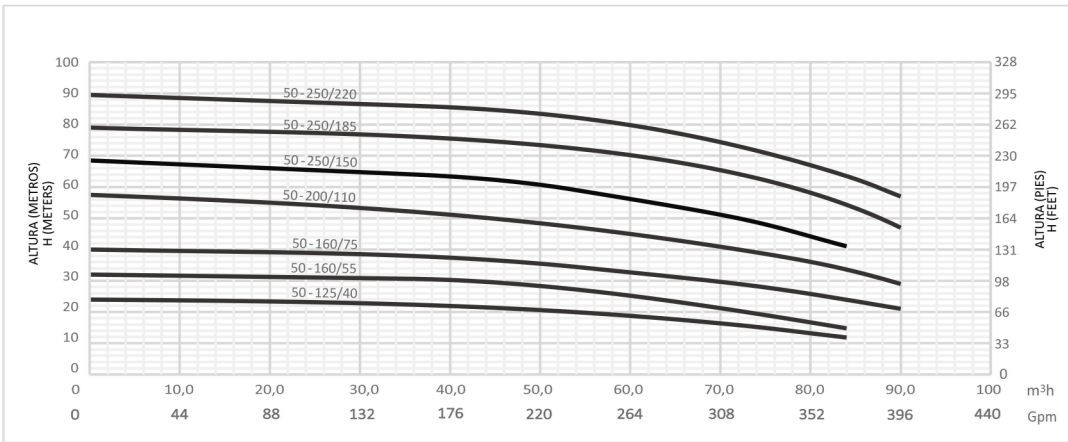
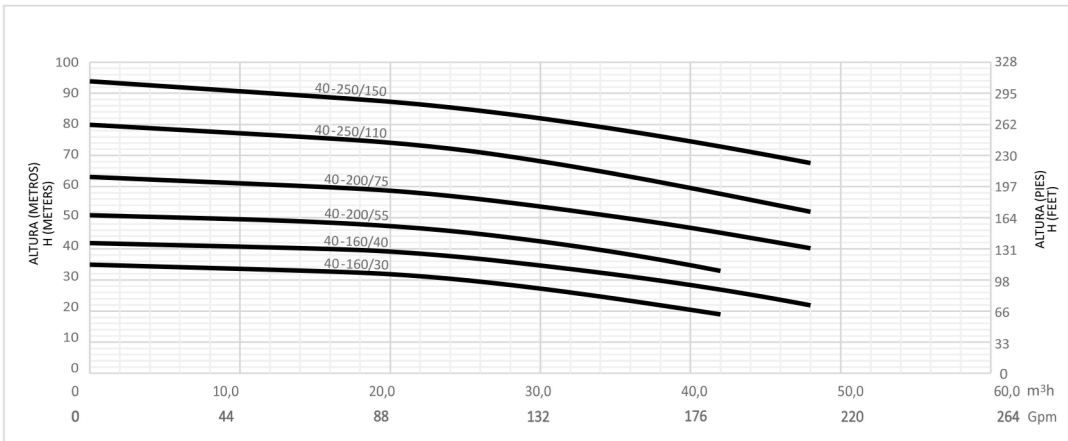
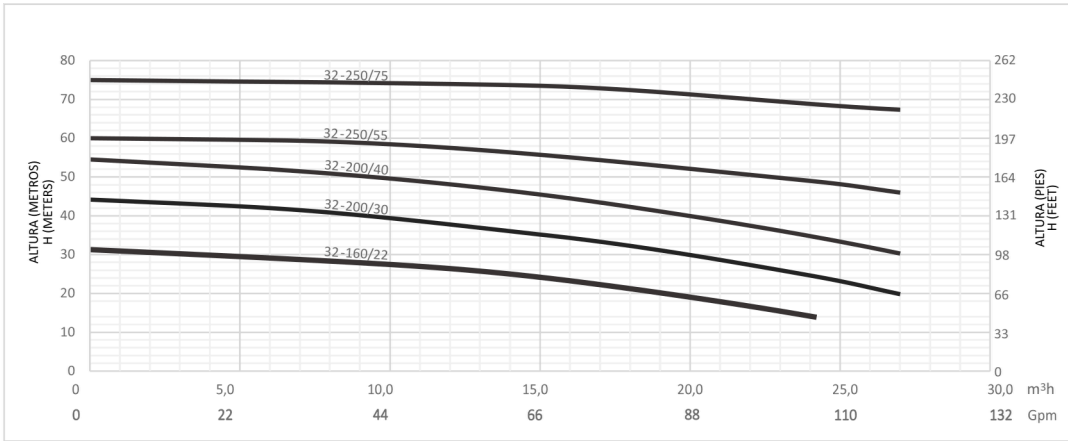
| MODEL          | HP  | Kw  | RPM  | Volt | Amp       | Frec (Hz) | IP | Ph | Gpm       | 0,0 | 79,2 | 106,0 | 119,0 | 158,0 | 185,0 | 211,0 | 238,0 | 317,0 |
|----------------|-----|-----|------|------|-----------|-----------|----|----|-----------|-----|------|-------|-------|-------|-------|-------|-------|-------|
| MODELO         |     |     |      |      |           |           |    |    | m3/h      | 0,0 | 18,0 | 24,0  | 27,0  | 36,0  | 42,0  | 48,0  | 54,0  | 72,0  |
| PST 40-160/30  | 4   | 3   | 2900 | 380  | 10,9/6,2  | 50        | 55 | 3  | Alt (ft)  | 104 | 97   | 90    | 86    | 71    | 57    |       |       |       |
|                |     |     |      |      |           |           |    |    | Alt (mts) | 32  | 30   | 28    | 26    | 22    | 18    |       |       |       |
| PST 40-160/40  | 5,5 | 4   | 2900 | 380  | 8,2/4,7   | 50        | 55 | 3  | Alt (ft)  | 125 | 118  | 112   | 108   | 93    | 82    | 66    |       |       |
|                |     |     |      |      |           |           |    |    | Alt (mts) | 38  | 36   | 34    | 33    | 29    | 25    | 20    |       |       |
| PST 40-200/55  | 7,5 | 5,5 | 2900 | 380  | 11,1/6,4  | 50        | 55 | 3  | Alt (ft)  | 151 | 144  | 135   | 132   | 115   | 98    |       |       |       |
|                |     |     |      |      |           |           |    |    | Alt (mts) | 46  | 44   | 41    | 40    | 35    | 30    |       |       |       |
| PST 40-200/75  | 10  | 7,5 | 2900 | 380  | 15/8,7    | 50        | 55 | 3  | Alt (ft)  | 187 | 176  | 169   | 164   | 148   | 135   | 120   |       |       |
|                |     |     |      |      |           |           |    |    | Alt (mts) | 57  | 54   | 52    | 50    | 45    | 41    | 37    |       |       |
| PST 40-250/110 | 15  | 11  | 2900 | 380  | 21,8/12,6 | 50        | 55 | 3  | Alt (ft)  | 236 | 221  | 213   | 208   | 189   | 171   | 154   |       |       |
|                |     |     |      |      |           |           |    |    | Alt (mts) | 72  | 68   | 65    | 64    | 58    | 52    | 47    |       |       |
| PST 40-250/150 | 20  | 15  | 2900 | 380  | 29,4/17   | 50        | 55 | 3  | Alt (ft)  | 277 | 260  | 254   | 247   | 230   | 217   | 200   |       |       |
|                |     |     |      |      |           |           |    |    | Alt (mts) | 85  | 79   | 77    | 75    | 70    | 66    | 61    |       |       |

| MODEL          | HP  | Kw   | RPM  | Volt | Amp       | Frec (Hz) | IP | Ph | Gpm       | 0,0 | 158,0 | 185,0 | 211,0 | 238,0 | 317,0 | 370,0 | 396,0 | 475,0 |
|----------------|-----|------|------|------|-----------|-----------|----|----|-----------|-----|-------|-------|-------|-------|-------|-------|-------|-------|
| MODELO         |     |      |      |      |           |           |    |    | m3/h      | 0,0 | 36,0  | 42,0  | 48,0  | 54,0  | 72,0  | 84,0  | 90,0  | 108,0 |
| PST 50-125/40  | 5,5 | 4    | 2900 | 380  | 8,2/4,7   | 50        | 55 | 3  | Alt (ft)  | 79  | 76    | 75    | 71    | 67    | 52    | 39    |       |       |
|                |     |      |      |      |           |           |    |    | Alt (mts) | 24  | 23    | 23    | 22    | 20    | 16    | 12    |       |       |
| PST 50-160/55  | 7,5 | 5,5  | 2900 | 380  | 11,1/6,4  | 50        | 55 | 3  | Alt (ft)  | 105 | 100   | 98    | 92    | 87    | 67    | 49    |       |       |
|                |     |      |      |      |           |           |    |    | Alt (mts) | 32  | 31    | 30    | 28    | 27    | 21    | 15    |       |       |
| PST 50-160/75  | 10  | 7,5  | 2900 | 380  | 15/8,7    | 50        | 55 | 3  | Alt (ft)  | 131 | 125   | 121   | 118   | 113   | 95    | 79    | 69    |       |
|                |     |      |      |      |           |           |    |    | Alt (mts) | 40  | 38    | 37    | 36    | 34    | 29    | 24    | 21    |       |
| PST 50-200/110 | 15  | 11   | 2900 | 380  | 21,8/12,6 | 50        | 55 | 3  | Alt (ft)  | 189 | 175   | 171   | 164   | 156   | 131   | 112   | 95    |       |
|                |     |      |      |      |           |           |    |    | Alt (mts) | 58  | 54    | 52    | 50    | 48    | 40    | 34    | 29    |       |
| PST 50-250/150 | 20  | 15   | 2900 | 380  | 29,4/17   | 50        | 55 | 3  | Alt (ft)  | 225 | 210   | 207   | 202   | 194   | 164   | 135   |       |       |
|                |     |      |      |      |           |           |    |    | Alt (mts) | 69  | 64    | 63    | 62    | 59    | 50    | 41    |       |       |
| PST 50-250/185 | 25  | 18,5 | 2900 | 380  | 35,5/20,5 | 50        | 55 | 3  | Alt (ft)  | 259 | 249   | 245   | 243   | 235   | 208   | 182   | 154   |       |
|                |     |      |      |      |           |           |    |    | Alt (mts) | 79  | 76    | 75    | 74    | 72    | 64    | 56    | 47    |       |
| PST 50-250/220 | 30  | 22   | 2900 | 380  | 42,2/24,4 | 50        | 55 | 3  | Alt (ft)  | 294 | 282   | 280   | 276   | 267   | 241   | 208   | 187   |       |
|                |     |      |      |      |           |           |    |    | Alt (mts) | 90  | 86    | 85    | 84    | 82    | 74    | 64    | 57    |       |

| MODEL          | HP  | Kw   | RPM  | Volt | Amp       | Frec (Hz) | IP | Ph | Gpm       | 0,0 | 211,2 | 238,0 | 317,0 | 370,0 | 396,0 | 475,0 | 528,0 | 607,0 |
|----------------|-----|------|------|------|-----------|-----------|----|----|-----------|-----|-------|-------|-------|-------|-------|-------|-------|-------|
| MODELO         |     |      |      |      |           |           |    |    | m3/h      | 0,0 | 48,0  | 54,0  | 72,0  | 84,0  | 90,0  | 108,0 | 120,0 | 138,0 |
| PST 65-125/55  | 7,5 | 5,5  | 2900 | 380  | 11,1/6,4  | 50        | 55 | 3  | Alt (ft)  | 75  | 70    | 69    | 62    | 57    | 55    | 45    |       |       |
|                |     |      |      |      |           |           |    |    | Alt (mts) | 23  | 21    | 21    | 19    | 18    | 17    | 14    |       |       |
| PST 65-125/75  | 10  | 7,5  | 2900 | 380  | 15/8,7    | 50        | 55 | 3  | Alt (ft)  | 89  | 85    | 84    | 80    | 75    | 74    | 66    | 59    |       |
|                |     |      |      |      |           |           |    |    | Alt (mts) | 27  | 26    | 26    | 25    | 23    | 23    | 20    | 18    |       |
| PST 65-160/110 | 15  | 11   | 2900 | 380  | 21,8/12,6 | 50        | 55 | 3  | Alt (ft)  |     | 118   | 113   | 108   | 103   | 101   | 92    | 84    |       |
|                |     |      |      |      |           |           |    |    | Alt (mts) |     | 36    | 35    | 33    | 32    | 31    | 28    | 26    |       |
| PST 65-160/150 | 20  | 15   | 2900 | 380  | 29,4/17   | 50        | 55 | 3  | Alt (ft)  |     | 138   | 135   | 131   | 126   | 124   | 115   | 108   | 97    |
|                |     |      |      |      |           |           |    |    | Alt (mts) |     | 42    | 41    | 40    | 39    | 38    | 35    | 33    | 30    |
| PST 65-200/185 | 25  | 18,5 | 2900 | 380  | 35,5/20,5 | 50        | 55 | 3  | Alt (ft)  |     | 171   | 172   | 167   | 161   | 158   | 146   | 138   |       |
|                |     |      |      |      |           |           |    |    | Alt (mts) |     | 52    | 52    | 51    | 49    | 48    | 45    | 42    |       |
| PST 65-200/220 | 30  | 22   | 2900 | 380  | 42,2/24,4 | 50        | 55 | 3  | Alt (ft)  |     | 262   | 262   | 254   | 248   | 244   | 230   | 216   | 190   |
|                |     |      |      |      |           |           |    |    | Alt (mts) |     | 59    | 60    | 58    | 56    | 55    | 52    | 50    | 45    |
| PST 65-250/300 | 40  | 30   | 2900 | 380  | 56,9/32,9 | 50        | 55 | 3  | Alt (ft)  |     | 262   | 262   | 254   | 248   | 244   | 230   | 216   | 190   |
|                |     |      |      |      |           |           |    |    | Alt (mts) |     | 80    | 80    | 78    | 76    | 75    | 70    | 66    | 58    |
| PST 65-250/370 | 50  | 37   | 2900 | 380  | 69,8/40,3 | 50        | 55 | 3  | Alt (ft)  |     | 302   | 297   | 290   | 285   | 279   | 264   | 256   | 223   |
|                |     |      |      |      |           |           |    |    | Alt (mts) |     | 92    | 91    | 89    | 87    | 85    | 81    | 78    | 68    |

# CURVAS DE RENDIMIENTO

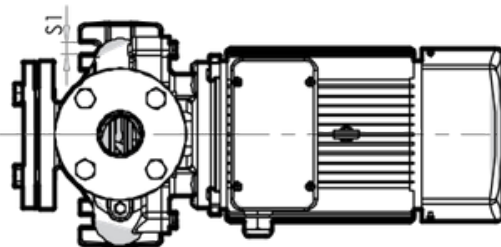
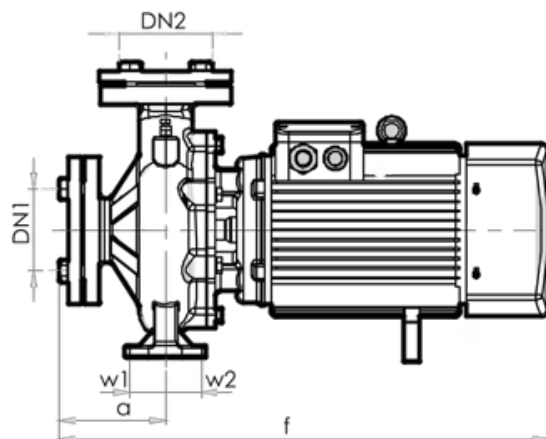
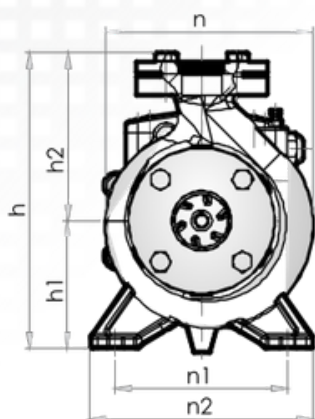
# L I N E A



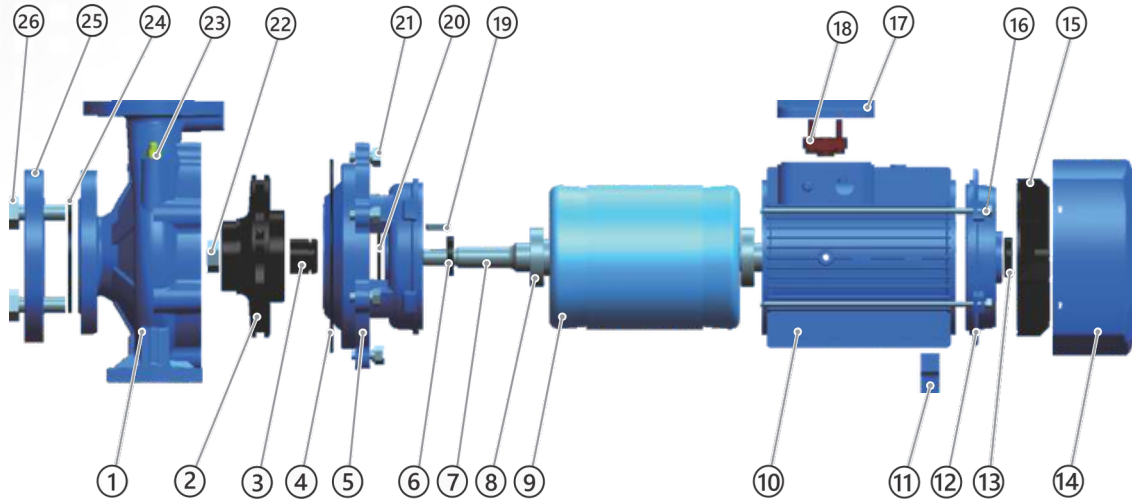
# MEDIDAS GENERALES

# LINEA PST

ELECTROBOMBAS CENTRIFUGAS HORIZONTALES NORMALIZADAS MONOBLOCK

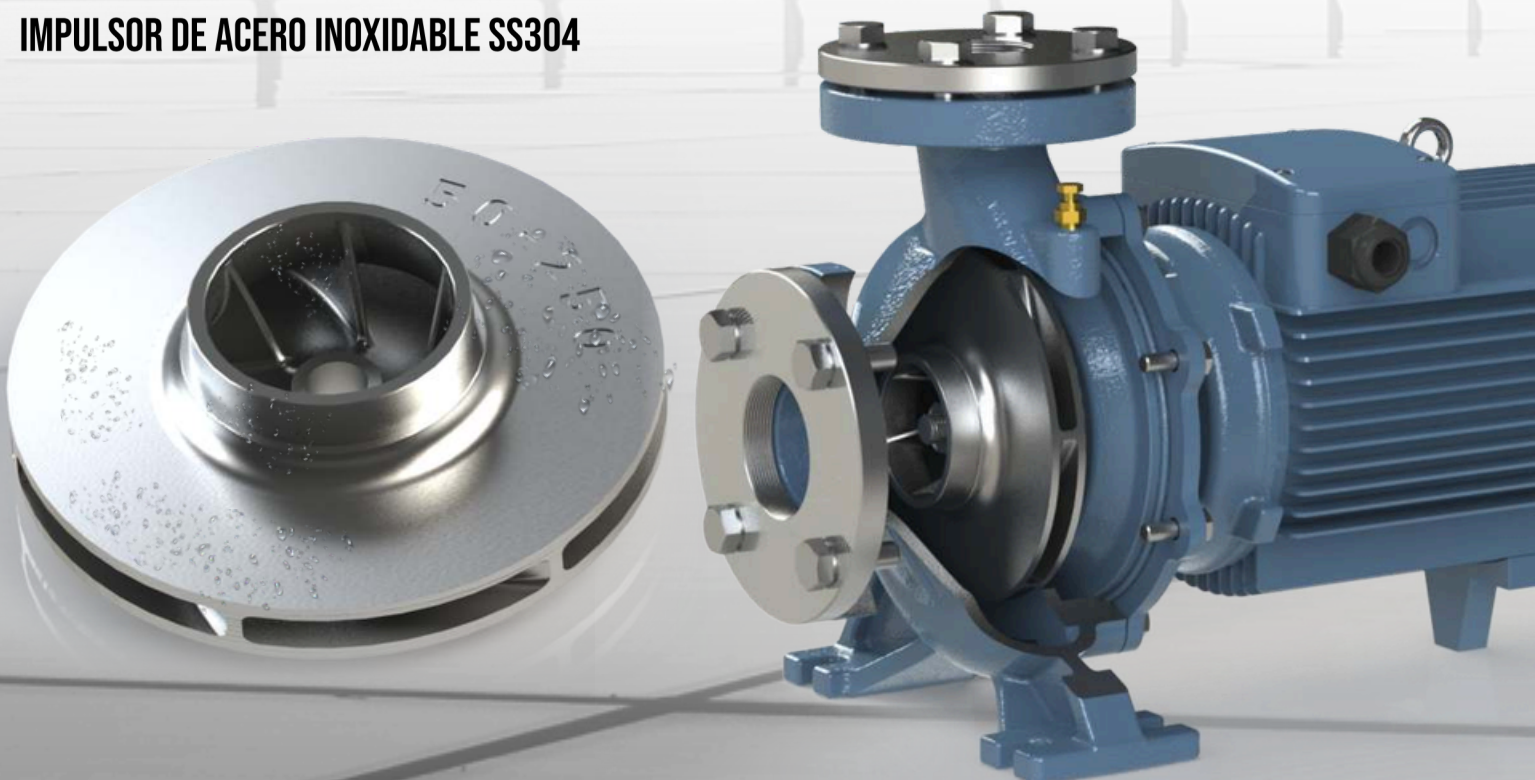


|                | DN1    | DN2    | A     | F     | H     | H1    | H2    | N     | N1    | N2    | W1   | W2   | S    | Net Weight |
|----------------|--------|--------|-------|-------|-------|-------|-------|-------|-------|-------|------|------|------|------------|
|                |        |        |       |       |       |       |       |       |       |       |      |      |      | Peso Neto  |
| PST 32-160/22  | 2"     | 1 1/4" | 3,3"  | 17,1" | 11,6" | 5,2"  | 6,4"  | 9,6"  | 7,5"  | 9,6"  | 1,4" | 1,4" | 0,6" | 128lb      |
|                |        |        | 83mm  | 435mm | 295mm | 133mm | 162mm | 245mm | 190mm | 245mm | 35mm | 35mm | 15mm | 39kg       |
| PST 32-200/30  | 2"     | 1 1/4" | 3,2"  | 19,3" | 13,5" | 6,4"  | 7,1"  | 10,4" | 7,5"  | 9,5"  | 1,4" | 1,4" | 0,6" | 103,6lb    |
|                |        |        | 82mm  | 490mm | 342mm | 161mm | 181mm | 265mm | 190mm | 240mm | 35mm | 35mm | 15mm | 47 kg      |
| PST 32-200/40  | 2"     | 1 1/4" | 3,2"  | 19,3" | 13,5" | 6,4"  | 7,1"  | 10,4" | 7,5"  | 9,5"  | 1,4" | 1,4" | 0,6" | 174lb      |
|                |        |        | 82mm  | 490mm | 342mm | 161mm | 181mm | 265mm | 190mm | 240mm | 35mm | 35mm | 15mm | 53kg       |
| PST 32-250/55  | 2"     | 1 1/4" | 3,5"  | 23,2" | 15,9" | 7,3"  | 8,6"  | 13,1" | 9,8"  | 12,9" | 1,9" | 1,9" | 0,6" | 218,3lb    |
|                |        |        | 88mm  | 590mm | 405mm | 186mm | 219mm | 333mm | 250mm | 328mm | 49mm | 49mm | 16mm | 99 kg      |
| PST 32-250/75  | 2"     | 1 1/4" | 3,5"  | 23,2" | 15,9" | 7,3"  | 8,6"  | 13,1" | 9,8"  | 12,9" | 1,9" | 1,9" | 0,6" | 240lb      |
|                |        |        | 88mm  | 590mm | 405mm | 186mm | 219mm | 333mm | 250mm | 328mm | 49mm | 49mm | 16mm | 73kg       |
| PST 40-160/30  | 2 1/2" | 1 1/2" | 3,15" | 19,3" | 12"   | 5,3"  | 6,7"  | 9,8"  | 7,5"  | 9,5"  | 1,5" | 1,5" | 0,6" | 106lb      |
|                |        |        | 80mm  | 490mm | 305mm | 135mm | 170mm | 250mm | 190mm | 241mm | 37mm | 37mm | 15mm | 48kg       |
| PST 40-160/40  | 2 1/2" | 1 1/2" | 3,15" | 19,3" | 12"   | 5,3"  | 6,7"  | 9,8"  | 7,5"  | 9,5"  | 1,5" | 1,5" | 0,6" | 70,5lb     |
|                |        |        | 80mm  | 490mm | 305mm | 135mm | 170mm | 250mm | 190mm | 241mm | 37mm | 37mm | 15mm | 32 kg      |
| PST 40-200/55  | 2 1/2" | 1 1/2" | 4"    | 22"   | 13,6" | 6,4"  | 7,6"  | 11,1" | 8,4"  | 10,5" | 1,5" | 1,5" | 0,6" | 140,0lb    |
|                |        |        | 102mm | 560mm | 345mm | 162mm | 193mm | 282mm | 214mm | 267mm | 37mm | 37mm | 15mm | 63,5 kg    |
| PST 40-200/75  | 2 1/2" | 1 1/2" | 4"    | 22"   | 13,6" | 6,4"  | 7,6"  | 11,1" | 8,4"  | 10,5" | 1,5" | 1,5" | 0,6" | 144,4lb    |
|                |        |        | 102mm | 560mm | 345mm | 162mm | 193mm | 282mm | 214mm | 267mm | 37mm | 37mm | 15mm | 65,5 kg    |
| PST 40-250/110 | 2 1/2" | 1 1/2" | 3,7"  | 28"   | 16,3" | 7,3"  | 9"    | 12,9" | 9,8"  | 12,9" | 1,9" | 1,9" | 0,6" | 209,4lb    |
|                |        |        | 94mm  | 712mm | 415mm | 186mm | 229mm | 327mm | 250mm | 327mm | 49mm | 49mm | 15mm | 95 kg      |
| PST 40-250/150 | 2 1/2" | 1 1/2" | 3,7"  | 28"   | 16,3" | 7,3"  | 9"    | 12,9" | 9,8"  | 12,9" | 1,9" | 1,9" | 0,6" | 304,2lb    |
|                |        |        | 94mm  | 712mm | 415mm | 186mm | 229mm | 327mm | 250mm | 327mm | 49mm | 49mm | 15mm | 138 kg     |
| PST 50-125/40  | 2 1/2" | 2"     | 4"    | 20,7" | 12"   | 5,3"  | 6,7"  | 10,4" | 7,5"  | 9,7"  | 1,5" | 1,5" | 0,6" | 171lb      |
|                |        |        | 102mm | 525mm | 305mm | 135mm | 170mm | 263mm | 190mm | 245mm | 37mm | 37mm | 15mm | 52kg       |
| PST 50-160/55  | 2 1/2" | 2"     | 4,3"  | 22"   | 13,7" | 6,5"  | 7,6"  | 10,6" | 8,4"  | 10,3" | 1,5" | 1,5" | 0,6" | 138,9lb    |
|                |        |        | 110mm | 560mm | 348mm | 164mm | 193mm | 270mm | 212mm | 262mm | 37mm | 37mm | 15mm | 63 kg      |
| PST 50-160/75  | 2 1/2" | 2"     | 4,3"  | 22"   | 13,7" | 6,5"  | 7,6"  | 10,6" | 8,4"  | 10,3" | 1,5" | 1,5" | 0,6" | 233lb      |
|                |        |        | 110mm | 560mm | 348mm | 164mm | 193mm | 270mm | 212mm | 262mm | 37mm | 37mm | 15mm | 71 kg      |
| PST 50-200/110 | 2 1/2" | 2"     | 4"    | 28,4" | 15,4" | 7,3"  | 8,1"  | 12"   | 9,1"  | 12,2" | 1,5" | 1,5" | 0,6" | 205,0lb    |
|                |        |        | 104mm | 722mm | 392mm | 186mm | 206mm | 307mm | 232mm | 310mm | 37mm | 37mm | 15mm | 93 kg      |
| PST 50-250/150 | 2 1/2" | 2"     | 4"    | 28,3" | 16,4" | 7,3"  | 9"    | 13"   | 9,8"  | 12,9" | 1,9" | 1,9" | 0,6" | 486lb      |
|                |        |        | 102mm | 720mm | 416mm | 186mm | 230mm | 330mm | 250mm | 327mm | 49mm | 49mm | 15mm | 148kg      |
| PST 50-250/185 | 2 1/2" | 2"     | 4"    | 28,3" | 16,4" | 7,3"  | 9"    | 13"   | 9,8"  | 12,9" | 1,9" | 1,9" | 0,6" | 502lb      |
|                |        |        | 102mm | 720mm | 416mm | 186mm | 230mm | 330mm | 250mm | 327mm | 49mm | 49mm | 15mm | 153kg      |
| PST 50-250/220 | 2 1/2" | 2"     | 4"    | 28,3" | 16,4" | 7,3"  | 9"    | 13"   | 9,8"  | 12,9" | 1,9" | 1,9" | 0,6" | 205,0lb    |
|                |        |        | 102mm | 720mm | 416mm | 186mm | 230mm | 330mm | 250mm | 327mm | 49mm | 49mm | 15mm | 93 kg      |
| PST 65-125/55  | 3 1/4" | 2 1/2" | 4,1"  | 22,8" | 13,6" | 6,4"  | 7,6"  | 10,8" | 8,3"  | 11"   | 1,9" | 1,9" | 0,6" | 223lb      |
|                |        |        | 104mm | 580mm | 345mm | 162mm | 193mm | 275mm | 212mm | 280mm | 49mm | 49mm | 15mm | 68kg       |
| PST 65-125/75  | 3 1/4" | 2 1/2" | 4,1"  | 22,8" | 13,6" | 6,4"  | 7,6"  | 10,8" | 8,3"  | 11"   | 1,9" | 1,9" | 0,6" | 243lb      |
|                |        |        | 104mm | 580mm | 345mm | 162mm | 193mm | 275mm | 212mm | 280mm | 49mm | 49mm | 15mm | 74kg       |
| PST 65-160/110 | 3 1/4" | 2 1/2" | 4,3"  | 28,7" | 16,7" | 7,3"  | 9,4"  | 13"   | 9,1"  | 12,2" | 1,9" | 1,9" | 0,6" | 348lb      |
|                |        |        | 110mm | 730mm | 425mm | 186mm | 239mm | 330mm | 232mm | 309mm | 49mm | 49mm | 15mm | 106kg      |
| PST 65-160/150 | 3 1/4" | 2 1/2" | 4,3"  | 28,7" | 16,7" | 7,3"  | 9,4"  | 13"   | 9,1"  | 12,2" | 1,9" | 1,9" | 0,6" | 440lb      |
|                |        |        | 110mm | 730mm | 425mm | 186mm | 239mm | 330mm | 232mm | 309mm | 49mm | 49mm | 15mm | 134kg      |
| PST 65-200/185 | 3 1/4" | 2 1/2" | 4,4"  | 29,1" | 16,7" | 7,3"  | 9,4"  | 13"   | 9,1"  | 12,2" | 1,9" | 1,9" | 0,6" | 476lb      |
|                |        |        | 111mm | 740mm | 425mm | 186mm | 239mm | 330mm | 232mm | 309mm | 49mm | 49mm | 15mm | 145kg      |
| PST 65-200/220 | 3 1/4" | 2 1/2" | 4,4"  | 29,1" | 16,7" | 7,3"  | 9,4"  | 13"   | 9,1"  | 12,2" | 1,9" | 1,9" | 0,6" | 607lb      |
|                |        |        | 111mm | 740mm | 425mm | 186mm | 239mm | 330mm | 232mm | 309mm | 49mm | 49mm | 15mm | 185kg      |
| PST 65-250/300 | 3 1/4" | 2 1/2" | 4,6"  | 39"   | 16,5" | 7"    | 9,5"  | 14,5" | 11"   | 14,2" |      |      | 0,7" | 551,2lb    |
|                |        |        | 116mm | 990mm | 420mm | 180mm | 240mm | 369mm | 280mm | 360mm |      |      | 18mm | 250 kg     |
| PST 65-250/370 | 3 1/4" | 2 1/2" | 4,6"  | 39"   | 16,5" | 7"    | 9,5"  | 14,5" | 11"   | 14,2" |      |      | 0,7" | 595,2lb    |
|                |        |        | 116mm | 990mm | 420mm | 180mm | 240mm | 369mm | 280mm | 360mm |      |      | 18mm | 270 kg     |



| ITEM | DESCRIPCION     | MATERIAL             | ITEM | DESCRIPCION        | MATERIAL             |
|------|-----------------|----------------------|------|--------------------|----------------------|
| 1    | Cuerpo de Bomba | Hierro fundido       | 14   | Tapa Ventilador    | Acero                |
| 2    | Impulsor        | Acero inoxidable 304 | 15   | Ventilador         | Plástico             |
| 3    | Sello mecanico  | Sic/ grafito         | 16   | Bulon              | Acero                |
| 4    | O-ring          | NBR                  | 17   | Caja Bornera       | Varios               |
| 5    | Conector        | Hierro fundido       | 18   | Tablero            | Plástico             |
| 6    | Sello Reforzado | NBR                  | 19   | Chaveta            | Acero inoxidable 304 |
| 7    | Eje motor       | Acero inoxidable 304 | 20   | Deflector          | NBR                  |
| 8    | Rodamiento      | NSK                  | 21   | Bulon              | Acero                |
| 9    | Estator/ rotor  | Cobre                | 22   | Tuerca de Impulsor | Acero Galvazinado    |
| 10   | Carcasa motor   | Aluminio             | 23   | Tapon Cebado       | Bronce               |
| 11   | Base soporte    | Plástico             | 24   | Empaque            | NBR                  |
| 12   | Tapa trasera    | Hierro fundido       | 25   | Contra Brida       | Fundicion de hierro  |
| 13   | Sello Reforzado | NBR                  | 26   | Bulon              | Acero                |

## IMPULSOR DE ACERO INOXIDABLE SS304



# CARACTERÍSTICAS

# L I N E A



## APLICACIONES

Equipos de incendio, procesos industriales, abastecimiento de agua en grandes edificios, hotelería y complejos habitacionales.

